

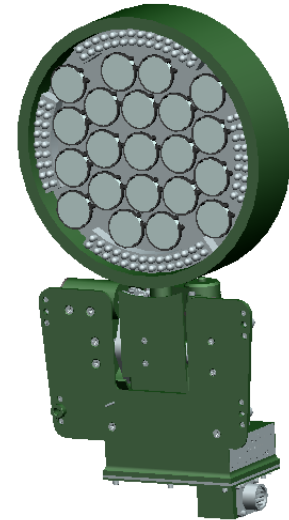
## LED LANDING LIGHT (3 L cd VERSION)



SYSTEM CONTROLS

Versatility is reality

Designed, developed and manufactured to meet the requirement of Landing/ Search light for low speed airborne platform Helicopter. Precision rugged steel gear trains are housed in a compact package for retraction, extension and rotation. Powered by DC Motors to operate gear mechanism and highly reliable slip ring to withstand wind loads. Limit switches are used to cut off/On the power supply as required. LED Landing Light can be rotated through 360° with high power visible/ Infrared Light selected ON in the extended position. Illumination conditions are in both IR and visible modes for +90° to -90° rotation.



### APPLICATION AREAS

- ◇ For primary use in helicopters during landing or taxing face

Part No: SC-SYS-LLL-A-00-000

### Technical Specification

Dual Modes of Operation	
First Mode of Operation	: Visible mode
First Mode of Operation	: Covert (IR) mode
Visible Mode Light Output	
Normal Lamp Peak Light Output	: 3,00,000 cd
Beam angle	: 14° Horizontal X 8° Vertical
IR (Covert) Mode Light Output	
IR Lamp Intensity	: 0.5 NRI minimum
Residual visible light in IR mode	: 1CP max.
Axial Radiant Intensity	: 30 mW/Sr
Wave length Range in IR mode	: 790-920nm
Beam angle	: 60° Horizontal X 60° Vertical
Extension and Retraction Stroke	
Extension and Retraction range	: 0° to 120°
Time taken for 0° to 120° extension	: 12 seconds max
Left and Right Rotation	
Rotation angle in both the directions	: N * 360°
Time taken for one rotation	: 15 sec max

### SERVICES

- ◆ Engineering Design & Development
- ◆ System Integration
- ◆ Electronic Testing & Assembly
- ◆ CNC Machining & Manufacturing

#### SYSTEM CONTROLS TECHNOLOGY SOLUTIONS

www.systemcontrolstsp.com  
webmaster@system-controls.com  
#65 & 66P, Hitech Defense and AeroSpace Industrial Area,  
Singahalli Villagae, Bangalore—562129  
Phone: +91 8069050400 Fax: +91 8069050413